

**SCOUTING CAMS
BINOCULARS**



WILDKAMERAS / SC



OUTING CAMS





BLACK200A Mini

- Bildsensor / Sensor 2MP
- IR LEDs 32 (850 nm)
- Auslösezeit / Trigger speed 0.2 sec
- Bildauflösung / Picture resolution 20/16/12/8/5/3/1MP
- Videoauflösung / Video resolution 1080p/720p/480p/240p 30fps
- Wasserschutz-Grad / Water protection IP66



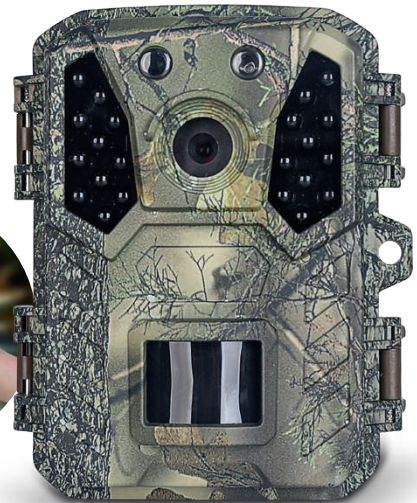
- Artikelnummer / Code 57651
- EAN 4000567576518

BLACK200 WiFi Mini

- Bildsensor / Sensor 2MP
- IR LEDs 22x (850 nm)
- Auslösezeit / Trigger speed 0.6 sec
- Bildauflösung / Picture resolution 32/24/20/16/12/8/4/2MP
- Videoauflösung / Video resolution 2.7K/1080/720p 30fps
- Wasserschutz-Grad / Water protection IP65



- Artikelnummer / Code 57652
- EAN 4000567576525



BLACK200 Mini

- Bildsensor / Sensor 2MP
- IR LEDs 2x High Power (850 nm)
- Auslösezeit / Trigger speed 0.5 sec
- Bildauflösung / Picture resolution 24/20/16/12/8/5/3/1MP
- Videoauflösung / Video resolution 1080p/720p/VGA 30fps
- Wasserschutz-Grad / Water protection IP65



- Artikelnummer / Code 57653
- EAN 4000567576532



BLACK300 WiFi Solar 4K Mini

- Bildsensor / Sensor 3MP
- IR LEDs 22x (850 nm)
- Auslösezeit / Trigger speed 0.3 sec
- Bildauflösung / Picture resolution 48/32/24/20/16/8/4/2MP
- Videoauflösung / Video resolution 4K/2.7K/1080p/720p 30fps
- Wasserschutz-Grad / Water protection IP65



- Artikelnummer / Code 57646
- EAN 4000567576464

BLACK400 WiFi Solar

- Bildsensor / Sensor 4MP
- IR LEDs 38x (850 nm)
- Auslösezeit / Trigger speed 0.4 sec
- Bildauflösung / Picture resolution 24/20/16/12/8/5/3/1MP
- Videoauflösung / Video resolution 4K 10fps / 2.7K 20fps / 1080/720/480p 30fps
- Wasserschutz-Grad / Water protection IP56



- Artikelnummer / Code 57659
- EAN 4000567576594



BLACK400 4G

- Bildsensor / Sensor 4MP
- IR LEDs 2x(850 nm)
- Auslösezeit / Trigger speed 0.4 sec
- Bildauflösung / Picture resolution 32/24/20/16/8/4/2MP (4G Aus/Off)
- Videoauflösung / Video resolution 2.7k/1080P/720P 30fps
- Wasserschutz-Grad / Water protection IP66



- Artikelnummer / Code 57644
- EAN 4000567576440



BLACK400 Dual WiFi

- Bildsensor / Sensor 4MP
- IR LEDs 39x(940nm)
- Auslösezeit / Trigger speed 0.6 sec
- Bildauflösung / Picture resolution 48/32/20/16/12/8/4MP
- Videoauflösung / Video resolution 1440P/1080P/720P 30fps
- Wasserschutz-Grad / Water protection IP66



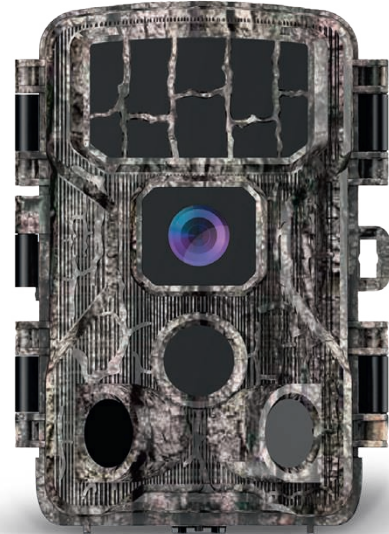
- Artikelnummer / Code 57650
- EAN 4000567576501

BLACK400 WiFi 4K

- Bildsensor / Sensor 4MP
- IR LEDs 42x (850nm)
- Auslösezeit / Trigger speed 0.4 sec
- Bildauflösung / Picture resolution 46/40/30/24/20/16/12/8/5/4MP
- Videoauflösung / Video resolution 4K/2.7K/2K/1296p/1080p/720p/480p/360p 30fps
- Wasserschutz-Grad / Water protection IP65



- Artikelnummer / Code 57654
- EAN 4000567576549



BLACK400 WiFi 8K

- Bildsensor / Sensor 4MP
- IR LEDs 2x (High Power 850nm)
- Auslösezeit / Trigger speed 0.3 sec
- Bildauflösung / Picture resolution 60/48/42/36/32/24/20/16/8/4MP/2MP
- Videoauflösung / Video resolution 8K/4K/2.7K/1080P/720P 30fps
- Wasserschutz-Grad / Water protection IP66



- Artikelnummer / Code 57645
- EAN 4000567576457



BLACK300

- Bildsensor / Sensor 5MP
- IR LEDs 40x (940 nm)
- Auslösezeit / Trigger speed 0.5 sec
- Bildauflösung / Picture resolution 24/20/16/12/8/5/3/1MP
- Videoauflösung / Video resolution 1080P/720P/480P 30fps
- Wasserschutz-Grad / Water protection IP65



- Artikelnummer / Code 57660
- EAN 4000567576600

BLACK700

- Bildsensor / Sensor 5MP
- IR LEDs 48x (850 nm)
- Auslösezeit / Trigger speed 0.5 sec
- Bildauflösung / Picture resolution 16/12/8MP
- Videoauflösung / Video resolution 1080P/720P/VGA 30fps
- Wasserschutz-Grad / Water protection IP65



- Artikelnummer / Code 57663
- EAN 4000567576631



BLACK550

- Bildsensor / Sensor 5MP
- IR LEDs 6x High Power (850 nm)
- Auslösezeit / Trigger speed 0.5 sec
- Bildauflösung / Picture resolution 50/36/24/20/16/12/8/5/3/1MP
- Videoauflösung / Video resolution 4K 10fps/2.7K 20fps/1080p,720p 30fps
- Wasserschutz-Grad / Water protection IP65



- Artikelnummer / Code 57658
- EAN 4000567576587



BLACK575

- Bildsensor / Sensor 5MP
- IR LEDs 28x (940 nm)
- Auslösezeit / Trigger speed 0.5 sec
- Bildauflösung / Picture resolution 50/36/24/20/16/12/8/5/3/1MP
- Videoauflösung / Video resolution 4K 10fps/2.7K 20fps/1080p, 720p, 480P 30fps
- Wasserschutz-Grad / Water protection IP65



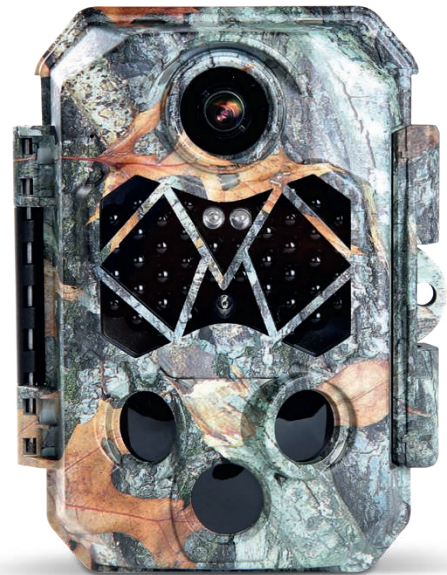
- Artikelnummer / Code 57656
- EAN 4000567576563

BLACK500 4K

- Bildsensor / Sensor 5MP
- IR LEDs 44x(940nm)
- Auslösezeit / Trigger speed 0.6 sec
- Bildauflösung / Picture resolution 48/30/24/20/16/12/10/8/7/5/3MP
- Videoauflösung / Video resolution 4K/2.7K 30fps, 1080P 60fps, 720P/VGA 30fps
- Wasserschutz-Grad / Water protection IP66



- Artikelnummer / Code 57649
- EAN 4000567576495



BLACK800 Mini

- Bildsensor / Sensor 8MP
- IR LEDs 2x High Power (850 nm)
- Auslösezeit / Trigger speed 0.2 sec
- Bildauflösung / Picture resolution 20/16/12/10/8/5/3/1MP
- Videoauflösung / Video resolution 4K 10fps/2.7K 20fps/1080p /720p/VGA 30fps /720p 60fps
- Wasserschutz-Grad / Water protection IP66



- Artikelnummer / Code 57669
- EAN 4000567576693

BLACK800 WiFi

- Bildsensor / Sensor 8MP
- IR LEDs 34x (850 nm)
- Auslösezeit / Trigger speed 0.6 sec
- Bildauflösung / Picture resolution 24/20/16/12/10/8/5/3/2MP
- Videoauflösung / Video resolution 1296P/1080P/720P/VGA 30fps
- Wasserschutz-Grad / Water protection IP66



- Artikelnummer / Code 57666
- EAN 4000567576662



BLACK800

- Bildsensor / Sensor 8MP
- IR LEDs 20 (850 nm)
- Auslösezeit / Trigger speed 0.2 sec
- Bildauflösung / Picture resolution 32/20/16/12/8/5/3/1MP
- Videoauflösung / Video resolution 4K 10fps/2.7K 20fps/1080p 30fps/720p 60fps/720p 30fps/480p 30fps/240p 30fps
- Wasserschutz-Grad / Water protection IP66



- Artikelnummer / Code 57643
- EAN 4000567576433

Dual Sensor



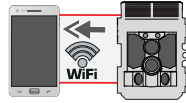
BLACK820 Dual Sensor

- Bildsensor / Sensor 8MP / 2MP (Nachtsensor / Night sensor)
- IR LEDs 42x (940 nm)
- Auslösezeit / Trigger speed 0.35 sec
- Bildauflösung / Picture resolution 32/20/16/12/8/5MP & 8/5/3/2 MP (Nachtsensor / Night sensor)
- Videoauflösung / Video resolution 4K 10fps/2.7K20fps/1080p 30fps/720p 60fps/D1/VGA/QVGA 30fps 1080p/720p/VGA 30fps (Nachtsensor/Night sensor)
- Wasserschutz-Grad / Water protection IP66



- Artikelnummer / Code 57668
- EAN 4000567576688





BLACK800 WiFi Solar 4K

- Bildsensor / Sensor 8MP
- IR LEDs 2x(850nm)
- Auslösezeit / Trigger speed 0.3 sec
- Bildauflösung / Picture resolution 112/92/85/75/73/71/59/48/45/38/33/30/25/21/16/12/8/4/2MP
- Videoauflösung / Video resolution 4K/2K/1296P/1080P/720P/480P/360P 30fps
- Wasserschutz-Grad / Water protection IP66



- Artikelnummer / Code 57641
- EAN 4000567576419

BLACK800 5K

- Bildsensor / Sensor 8MP
- IR LEDs 38x(940nm)
- Auslösezeit / Trigger speed 0.6 sec
- Bildauflösung / Picture resolution 48/30/24/16/12/8/5MP
- Videoauflösung / Video resolution 5K/4K/2.7K/1080p 30fps, 1080P 120/60fps, 1080P Slow Motion 30fps
- Wasserschutz-Grad / Water protection IP66



- Artikelnummer / Code 57648
- EAN 4000567576488



BLACK1300

- Bildsensor / Sensor 13MP
- IR LEDs 40x (850 nm)
- Auslösezeit / Trigger speed 0.2 sec
- Bildauflösung / Picture resolution 48/30/24/20/16/13/8/5/3MP
- Videoauflösung / Video resolution 4K 10 fps/2.7K 20 fps/1080p/720P/VGA 30fps
- Wasserschutz-Grad / Water protection IP66



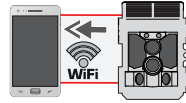
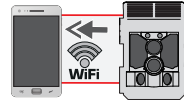
- Artikelnummer / Code 57667
- EAN 4000567576679

BLACK 1300 WiFi

- Bildsensor / Sensor 13MP
- IR LEDs 40x (850 nm)
- Auslösezeit / Trigger speed 0.2 sec
- Bildauflösung / Picture resolution 48/30/24/20/16/13/8/5/3MP
- Videoauflösung / Video resolution 4K 10 fps/2.7K 20 fps/1080p/720P/VGA 30fps
- Wasserschutz-Grad / Water protection IP66



- Artikelnummer / Code 57657
- EAN 4000567576570



BLACK 1321 WiFi Solar 4K DS

- Bildsensor / Sensor 13MP / 2MP (Nachtsensor / Night sensor)
- IR LEDs 2x High Power (850 nm)
- Auslösezeit / Trigger speed 0.5 sec
- Bildauflösung / Picture resolution 60/52/48/36/24/13/8/4/2 MP 8/4/2/1MP (Nachtsensor / Night sensor)
- Videoauflösung / Video resolution 4K/2.7K/2K/1080P/720P/480P/360P 30fps /2K/1080p 60fps 1296/1080p/720p/480p/360P 30fps (Nachtsensor / Night sensor)
- Wasserschutz-Grad / Water protection IP66

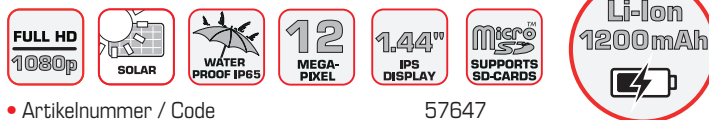


- Artikelnummer / Code 57642
- EAN 4000567576426

Bird Cam 130 Solar

Futterstelle und Vogelkamera / Feeder and Bird Cam

- Bildsensor / Sensor 1.3MP
- Auslösezeit / Trigger speed 0.8 sec
- Bildauflösung / Picture resolution 12MP/8MP/5MP/3MP
- Videoauflösung / Video resolution 1080p/720p/480p 30fps
- Wasserschutz-Grad / Water protection IP65



- Artikelnummer / Code 57647
- EAN 4000567576471



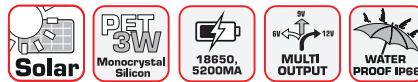
SCOUTING CAMS ZUBEHÖR/ACCESSORIES



Solar panel

- Solarpanel
- Multi Outputs
- Eingebaute Batterie / Built-in battery
- Stromquelle / Power Source
- Wasserschutz-Grad / Water protection

Einkristallines Silizium-PET 3W, 6V/500MA /
Monocrystal Silicon PET 3W, 6V/500MA
Output 1: 6V/2A
Output 2: 9V/1.3A
Output 3: 12V/1A
18650, 5200MA
DC 5V/2A
IP66



- Artikelnummer / Code
- EAN

58009
4000567580096



- 1/4" Stativgewinde
1/4" screw thread

Stahlkabelschloss / Steel Cable Lock 180cm

- Artikelnummer / Code 58008
- EAN 4000567580089

Baumschraube / Tree Mount 1/4"

- Artikelnummer / Code 58108
- EAN 4000567581086



MODELL	BLACK200A Mini	BLACK200 WiFi Mini	BLACK200 Mini	BLACK300 WiFi Solar 4K Mini
ARTIKELNUMMER / CODE	57651	57652	57643	57646
Bildsensor / Sensor	2MP	2MP	2MP	3MP
Speichermedium / Memory	micro SD (max. 512 GB)	micro SD (max. 256 GB)	micro SD (max. 256GB)	micro SD (max. 256GB)
Objektiv / Lens	FOV=90°	FOV=72°	FOV=60°	FOV=72°
Abmessungen / Dimensions	115×98×72 mm	110×90×56.5mm	105×75×43mm	126×90.5×81mm
Gewicht (ohne Batterien) / Weight (without batteries)	195g	172g	136g	263g
Display	2.4" TFT LCD Farbdisplay / Color display	2" TFT LCD Farbdisplay / Color display	2" TFT LCD Farbdisplay / Color display	2" TFT LCD Farbdisplay / Color display
PIR-Sensor Erfassungswinkel / PIR sensor detection angle	90°	90°	60°	90°
PIR Sensorempfindlichkeit / PIR sensitivity	Hoch/Mittel/Gering - High/Middle/Low	Hoch/Mittel/Gering - High/Middle/Low	Hoch/Mittel/Gering - High/Middle/Low	Hoch/Mittel/Gering - High/Middle/Low
Anzahl Bewegungssensoren / Quantity PIR sensors	3	1	1	1
IR LEDs	32 (850 nm)	22x (850 nm)	2x High Power (850 nm)	22x (850 nm)
Max. Nachtsicht-/Auslösedistanz / Max night vision/trigger distance	20m	15m	20m	21m
Auslösezeit / Trigger speed	0.2 sec	0.6 sec	0.5 sec	0.3 sec
Auslöseintervall / Trigger interval	5 sec - 60 min	5 sec - 60 min	5 sec - 60 min	5/10/15/20/30/40/50 sec 1-10/15/20/25/30/35/40/45/50/55/60 min
Bildauflösung / Picture resolution	20/16/12/8/5/3/1 MP	32/24/20/16/8/4/2 MP	24/20/16/12/8/5/3/1 MP	48/32/24/20/16/8/4/2 MP
Videoauflösung / Video resolution	1080p/720p/480p/240p 30fps	2.7K/1080p/720p 30fps	1080p/720p/VGA 30fps	4K/2.7K/1080p/720p 30fps
Videolänge / Video length	3 sec - 10 min	3 sec - 10 min	3 sec - 10 min	5-59 sec / 1-10 min
Dateiformat / File format	JPG & AVI	JPG & MP4 (2.7K AVI)	JPG & AVI	JPG & AVI
Temperaturangabe / Temperature imprint	+	+	+	+
Kennwortschutz / Password protection	4 Ziffern / 4 digits	4 Ziffern / 4 digits	4 Ziffern / 4 digits	4 Ziffern / 4 digits
Aufnahmezeitraum / Timed recording	2x 1 min - 24 h	1 min - 24 h	1 min - 24 h	1 min - 24 h
Zeitrafferaufnahmen / Timelapse	3 sec - 24 h	1 sec - 24 h	3 sec - 24 h	1 sec - 24 h
Endlosaufnahme / Endless capture	+	+	+	+
Standby-Stromverbrauch / Standby current	0.15 mA	0.1 mA	0.1 mA	0.2 mA
Standby-Zeit / Standby time	ca. 8 Monate / Months	ca. 6 Monate / Months	ca. 6 Monate / Months	ca. 6 Monate / Months
Anschlüsse / Interface	USB-C, micro SD, 6V DC	USB-C, micro SD, 6V DC	USB-C, micro SD, 6V DC	USB-C, microSD, 6V DC
Einsatztemperatur / Operation temperature	-20°C ~ +50°C	-20°C ~ +65°C	-10°C ~ +70°C	-15°C ~ +60°C
Stromversorgung / Power supply	4x AA Batterie oder 2x 18650 Akku oder 6v 1.5A Netzteil 4x AA or 2x 18650 batteries or 6V 1.5A power adapter	4x AA Batterie oder 6V 1.5A Netzteil / 4x AA batteries or 6V 1.5A power adapter	4x AA Batterie oder 6V 1.5A Netzteil / 4x AA batteries or 6V 1.5A power adapter	Solarpanel: 2600mAh Akku / battery (Li-Ion) Optional: 4x AA Batterie oder 6v 1.5A Netzteil / 4x AA batteries or 6V 1.5A power adapter
Größe Netzstecker / Power connector size	3.5x1.35mm	3.5x1.35mm	3.5x1.35mm	3.5x1.35mm
Wasserschutz-Grad / Water protection	IP66	IP65	IP65	IP65
WiFi	-	+(via APP)	-	+(via APP)
Bluetooth	-	+	-	+
Solarpanel	-	-	-	2600mAh Akku / Battery (Li-Ion)



MODELL	BLACK400 WiFi Solar	BLACK400 4G	BLACK400 Dual WiFi	BLACK400 WiFi 4K
ARTIKELNUMMER / CODE	57659	57644	57650	57654
Bildsensor / Sensor	4MP	4MP	4MP	4MP
Speichermedium / Memory	SD (max. 32 GB)	micro SD (max 128 GB)	Micro SD (max. 256GB)	micro SD (max. 128 GB)
Objektiv / Lens	FOV=90°	FOV=89°	FOV=90°	FOV=100°
Abmessungen / Dimensions	165×90×60 mm	305×103×68 mm	122×94×72mm	138×96×55 mm
Gewicht (ohne Batterien) / Weight (without batteries)	384g	290g	295g	268g
Display	2.4" TFT LCD Farbdisplay / Color display	2" TFT LCD Farbdisplay / Color display	2.0" TFT LCD Farbdisplay / Color display	2.4" TFT LCD Farbdisplay / Color display
PIR-Sensor Erfassungswinkel / PIR sensor detection angle	120°	60°	90°	120°
PIR Sensorempfindlichkeit / PIR sensitivity	Hoch/Mittel/Gering - High/Middle/Low	Hoch/Mittel/Gering, High/Middle/Low	Hoch/Mittel/Gering - High/Middle/Low	Hoch/Mittel/Gering - High/Middle/Low
Anzahl Bewegungssensoren / Quantity PIR sensors	3	2	1	3
IR LEDs	38x (850 nm)	2x (850 nm)	39x(940nm)	42x (850 nm)
Max. Nachtsicht-/Auslösedistanz / Max night vision/trigger distance	20m	20m	20m	22m
Auslösezeit / Trigger speed	0.4 sec	0.4 sec	0.6 sec	0.4 sec
Auslöseintervall / Trigger interval	5 sec - 60 min	5 sec - 60 min	5/10/15/20/30/40/50 sec 1/2/3/4/5/6/7/8/9/10/15/ 20/25/30/35/40/45/50/55 /60 min	5 sec - 60 min
Bildauflösung / Picture resolution	24/20/16/12/8/5/3/1 MP	32/24/20/16/8/4/2MP (4G Aus/Off) 8/4/2MP (4G An/On)	48/32/20/16/12/8/4 MP	46/40/30/24/20/16/ 12/8/5/4 MP
Videoauflösung / Video resolution	4K 10 fps / 2.7K 20fps / 1080/720/480p 30fps	2.7k/1080P/720P 30fps	1440P/1080P/720P 30 fps	4K/2.7K/2K/1296P/1080P/7 20P/480P/360P 30fps
Videolänge / Video length	3-59 sec / 1-5 min	5 sec - 10 min (4G Aus/Off) 5-20 sec (4G An/On)	5-59 sec, 1-10 min	5-180 sec
Dateiformat / File format	JPG & AVI	JPEG/MP4	JPG & MP4	JPG & MP4
Temperaturangabe / Temperature imprint	+	+	+	+
Kennwortschutz / Password protection	4 Ziffern / 4 digits	4 Ziffern / 4 digits	+	4 Ziffern / 4 digits
Aufnahmezeitraum / Timed recording	1 min - 24 h	1 min - 24 h	1 sec - 24 h	2x (1 min - 24 h)
Zeitrafferaufnahmen / Timelapse	3 sec - 24 h	1 sec - 24 h	1 sec - 24 h	5 sec - 24h
Endlosaufnahme / Endless capture	-	+	+	-
Standby-Stromverbrauch / Standby current	0.2 mA	0.2 mA	0.1 mA	0.2 mA
Standby-Zeit / Standby time	ca. 6 Monate / Months	ca. 3 Monate / Months	ca. 8 Monate / Months	ca. 6 Monate / Months
Anschlüsse / Interface	AV Out (NTSC/PAL), mini USB, USB-C, 6V DC	nano SIM, USB-C, micro SD, 6V DC	USB-C, Micro SD, 9V DC	micro USB, micro SD, 6V DC, AV Out
Einsatztemperatur / Operation temperature	-20°C ~ +60°C	-20°C ~ +60°C	-20°C ~ +60°C	-20°C ~ +60°C
Stromversorgung / Power supply	Solarpanel: 2600mAh Akku/ battery (Li-Ion) Optional: 4x AA Batterie oder 6V 1.5A Netzteil / 4x AA batteries or 6V 1.5A power adapter	8x AA Batterie/Battery oder/ or 6V 2A Netzteil/Power adapter	6x AA Batterie oder 9V 1A Netzteil / 6x AA batteries or 9V 1A power adapter	8x AA Batterie oder 6V 1.5A Netzteil / 8x AA batteries or 6V 1.5A power adapter
Größe Netzstecker / Power connector size	3.5x1.35mm	1.35x3.5mm	5.5x2.1mm	3.5x1.35mm
Wasserschutz-Grad / Water protection	IP56	IP66	IP66	IP65
WiFi	+(via APP)	- / 4G (LTE) +(via APP)	+(via APP)	+(via APP)
Bluetooth	+	-	+	+
Solarpanel	DC IN 12V/1A DC OUT 6V/2A Kapazität / Capacity: 2500mA Abmessungen / Dimensi- ons: 97x40x43 mm Gewicht / Weight: 260 g IP65	-	-	-



BLACK400 WiFi 8K	BLACK300	BLACK700	BLACK550	BLACK575	BLACK500 4K
57645	57660	57663	57658	57656	57649
4MP	5MP	5MP	5MP	5MP	5MP
micro SD (max. 128 GB)	micro SD (max. 32 GB)	micro SD (max. 32 GB)	micro SD (max. 256 GB)	micro SD (max. 256 GB)	Micro SD (max. 512GB)
FOV=120°	FOV=60°	FOV=90°	FOV=90°	FOV=90°	FOV=92°
138×98×58 mm	145×80×55 mm	175×85×45 mm	135×90×76 mm	135×90×76 mm	142×109×72 mm
244g	286g	200g	314g	310g	310g
2.0" TFT LCD Farbdisplay / Color display	2" TFT LCD Farbdisplay / Color display	2" TFT LCD Farbdisplay / Color display	2" TFT LCD Farbdisplay / Color display	2" TFT LCD Farbdisplay / Color display	2.4" TFT LCD Farbdisplay / Color display
120°	60°	120°	120°	120°	120°
Hoch/Mittel/Gering - High/Middle/Low	Hoch/Mittel/Gering - High/Middle/Low	Hoch/Mittel/Gering - High/Middle/Low	Hoch/Mittel/Gering - High/Middle/Low	Hoch/Mittel/Gering - High/Middle/Low	Hoch/Mittel/Gering - High/Middle/Low
1	1	1	3	1	3
2x (High Power 850nm)	40x (940 nm)	48x (850 nm)	6x 3W High Power (850 nm)	28x (940 nm)	44x(940nm)
15m	20m	20m	20m	20m	20m
0.3 sec	0.5 sec	0.5 sec	0.5 sec	0.5 sec	0.6 sec
5 sec - 60 min	5 sec - 60 min	1/5/10/30 sec/min	5 sec - 60 min	5 sec - 60 min	2s/5s/10s/15s/20s/30s/1min/2min/3min/5 min/10min/15min/30min/60min
60/48/42/36/32/24/20/16/8/4MP/2MP	24/20/16/12/8/5/3/1 MP	16/12/8 MP	50/36/24/20/16/12/8/5/3/1 MP	50/36/24/20/16/12/8/5/3/1 MP	48/30/24/20/16/12/10/8/7/5/3 MP
8K/4K/2.7K/1080P/720P 30fps	1080P/720P/480P 30 fps	1080P/720P/VGA @ 30 fps	4K 10fps/2.7K 20fps/1080p, 720 VGA 30fps	4K 10fps/2.7K 20fps/1080p, 720p, 480P 30fps	4K/2.7K 30fps, 1080Pn 60fps, 720P/VGA 30fps
5s-10min	3 sec - 10 min	10/30/60/90 sec	3 sec - 10 min	3 sec - 10 min	5s/10s/15s/20s/30s/1min/2min/3min/5min
JPG & AVI	JPG & AVI	JPG & MOV	JPG & AVI	JPG & AVI	JPG & MOV
+	+	+	+	+	+
4 Ziffern / Digits	4 Ziffern / 4 digits	4 Ziffern / 4 digits	4 Ziffern / 4 digits	4 Ziffern / 4 digits	Ja / Yes
1 min - 24 h	1 min - 24 h	1 sec - 24 h	1 min - 24 h	1 min - 24 h	2x 1 sec - 24 h
1 sec - 24h	3 sec - 24 h	5/30/60 min	3 sec - 24 h	3 sec - 24 h	30 sec - 12 h
+	+	-	+	+	+
0.2 mA	0.2 mA	0.2 mA	0.2 mA	0.2 mA	0.1 mA
ca. 6 Monate / Months	ca. 6 Monate / Months	ca. 6 Monate / Months	ca. 6 Monate / Months	ca. 6 Monate / Months	ca. 8 Monate / Months
USB-C, micro SD, 6V DC	micro USB, micro SD, 9V DC	micro USB, micro SD, 9V DC	USB-C, micro SD, 6V DC, AV Out	USB-C, micro SD, 6V DC, AV Out	Mini USB, Micro SD card, 6V DC
-20°C ~ +60°C	-30°C ~ +70°C	-20°C ~ +60°C	-20°C ~ +70°C	-20°C ~ +70°C	-20°C ~ +60°C
8x AA Batterie oder 6V 1.5A Netzteil / 8x AA batteries or 6V 1.5A power adapter	8x AA Batterie oder 6V 1.5A Netzteil / 8x AA batteries or 6V 1.5A power adapter	8x AA Batterie oder 9V 2A Netzteil / 8x AA batteries or 9V 2A power adapter	8x AA Batterie oder 6V 1.5A Netzteil / 8x AA batteries or 6V 1.5A power adapter	8x AA Batterie oder 6V 1.5A Netzteil / 8x AA batteries or 6V 1.5A power adapter	8x AA Batterie oder 6V 1.5A Netzteil / 8x AA batteries or 6V 1.5A power adapter
3.5x1.35mm	5.5x2.1mm	5.5x2.1mm	3.5x1.35mm	3.5x1.35mm	3.5x1.35mm
IP66	IP65	IP65	IP65	IP65	IP66
+(via APP)	-	-	-	-	-
+	-	-	-	-	-
-	-	-	-	-	-



MODELL	BLACK800 Mini	BLACK800 WiFi	BLACK800	BLACK820 Dual Sensor
ARTIKELNUMMER / CODE	57669	57666	57643	57668
Bildsensor / Sensor	8 MP	8MP	8MP	8MP / 2MP (Nachtsensor / Night sensor)
Speichermedium / Memory	micro SD (max. 512GB)	SD (max. 32GB)	micro SD (max. 512 GB)	SD (max. 512GB)
Objektiv / Lens	FOV=70°	FOV=90°	FOV=102°	FOV=75° / FOV=100° (Nachtsensor)
Abmessungen / Dimensions	104×74.6×43 mm	95×137.5×64 mm	136×90×76 mm	142×109×72 mm
Gewicht (ohne Batterien) / Weight (without batteries)	140g	292g	260g	320g
Display	2" TFT LCD Farbdisplay / Color display	2" LCD Farbdisplay / Color display	2.4" TFT LCD Farbdisplay / Color display	2.4" TFT LCD Farbdisplay / Color display
PIR-Sensor Erfassungswinkel / PIR sensor detection angle	60°	120°	110°	90°
PIR Sensorempfindlichkeit / PIR sensitivity	Hoch/Mittel/Gering - High/ Middle/Low	Hoch/Mittel/Gering - High/ Middle/Low	Hoch/Mittel/Gering - High/ Middle/Low	Hoch/Mittel/Gering - High/ Middle/Low
Anzahl Bewegungssensoren / Quantity PIR sensors	1	3	3	1
IR LEDs	2x High Power (850 nm)	34x (850 nm)	20 (850 nm)	42x (940 nm)
Max. Nachtsicht-/Auslösedistanz / Max night vision/trigger distance	20m	20m	15m	20m
Auslösezeit / Trigger speed	0.2 sec	0.6 sec	0.2 sec	0.35 sec
Auslöseintervall / Trigger interval	5 sec - 60 min	5 sec - 60 min	5 sec - 60 min	5 sec - 60 min
Bildauflösung / Picture resolution	20/16/12/8/5/3/1 MP	24/20/16/12/10/8/5/3/2 MP	32/20/16/12/8/5/3/1MP	32/20/16/12/8/5 MP & 8/5/3/2 MP (Nachtsensor / Night sensor)
Videoauflösung / Video resolution	4K 10fps/2.7K 20fps/ 1080p/720pVGA 30fps/720p 60fps	1296P/1080P/720P/VGA 30 fps	4K 10fps/2.7K 20fps/1080p 30fps/720p 60fps/720p 30fps/480p 30fps/240p 30fps	4K 10fps/2.7K 20fps/1080p 30fps/720p 60fps/D1/VGA/ QVGA30fps 1080p/720p/ VGA30fps (Nachtsensor/ Night sensor)
Videolänge / Video length	3 sec - 10 min	5 - 180 sec	3 sec - 10 min	3 sec - 10 min
Dateiformat / File format	JPG & AVI	JPG & MP4	JPG & AVI	JPG & AVI
Temperaturangabe / Temperature imprint	+	+	+	+
Kennwortschutz / Password protection	4 Ziffern / 4 digits	+	4 Ziffern / 4 digits	+
Aufnahmezeitraum / Timed recording	1 sec - 24 h	2x (1 sec - 24 h)	2x 1 min - 24 h	1 sec - 24 h
Zeitrafferaufnahmen / Timelapse	3 sec - 24 h	5 sec - 24 h	3 sec - 24 h	3 sec - 24 h
Endlosaufnahme / Endless capture	+	-	+	+
Standby-Stromverbrauch / Standby current	-	-	0.1 mA	0.1 mA
Standby-Zeit / Standby time	ca. 6 Monate / Months	ca. 6 Monate / Months	ca. 12 Monate / Months	ca. 8 Monate / Month
Anschlüsse / Interface	USB-C, micro SD, 6V DC	AV out, mini USB, SD, 6V DC	USB-C, micro SD, 6V DC	TV Out (NTSC/PAL Mini USB), Mini USB, SD Karte, 6V DC
Einsatztemperatur / Operation temperature	-7°C ~ +40°C	-20°C ~ +60°C	-20°C ~ +50°C	-20°C ~ +60°C
Stromversorgung / Power supply	4x AA Batterie oder 6V 2A Netzteil / 4x AA batteries or 6V 2A power adapter	8x AA Batterie oder 6V 2A Netzteil / 8x AA batteries or 6V 2A power adapter	8x AA Batterie oder 6V 1.5A Netzteil / 8x AA or 6V 1.5A power adapter	8x AA Batterie oder 6V 2A Netzteil / 8x AA batteries or 6V 2A power adapter
Größe Netzstecker / Power connector size	3.5x1.35mm	3.5x1.35mm	3.5x1.35mm	3.5x1.35mm
Wasserschutz-Grad / Water protection	IP66	IP66	IP66	IP66
WiFi	-	+ (via APP)	-	-
Bluetooth	-	-	-	-
Solarpanel	-	-	-	-



BLACK800 WiFi Solar 4K	BLACK800 5K	BLACK1300	BLACK1300 WiFi	BLACK1321 WiFi Solar 4K DS
57641	57648	57667	57657	57642
8MP	8MP	13MP	13MP	13MP
microSD (max. 256GB)	Micro SD (max. 512GB)	SD (max. 128 GB)	SD (max. 128 GB)	SD (Max. 256GB)
FOV=89°	FOV=102°	FOV=65°	FOV=65°	FOV=80° / FOV=93° (Nachtsensor / Night sensor)
143x107x95 mm	122x94x72mm	138x97x83 mm	138x97x83 mm	163x112x76 mm
406g	292g	264g	264g	458g
2.0" IPS TFT-LCD	2.0" TFT LCD Farbdisplay / Color display	2" TFT LCD Farbdisplay / Color display	2" TFT LCD Farbdisplay / Color display	2.4" TFT LCD Farbdisplay / Color display
120°	90°	120°	120°	120°
Hoch/Mittel/Gering - High/Middle/Low	Hoch/Mittel/Gering - High/Middle/Low	Hoch/Mittel/Gering - High/Middle/Low	Hoch/Mittel/Gering - High/Middle/Low	Hoch/Mittel/Gering - High/Middle/Low
3	1	3	3	3
2x (850nm)	38x(940nm)	40x (850 nm)	40x (850 nm)	2x High Power (850 nm)
20 m	20m	20m	20m	20m
0.3 sec	0.6 sec	0.2 sec	0.2 sec	0.5 sec
5 sec - 60 min	5-59 sec, 1-60 min	5 sec - 60 min	5 sec - 60 min	5 sec - 60 min
112/92/85/75/73/71/ 59/48/45/38/ 33/30/25/21/16/12/8/4/2MP	48/30/24/16/12/8/5 MP	48/30/24/20/16/13/8/5/3 MP	48/30/24/20/16/13/8/5/3 MP	60/52/48/36/24/13/8/4/2MP 8/4/2/1MP (Nachtsensor / Night sensor)
4K/2K/1296P/1080P/720P/480P/360P 30fps	5K/4K/2.7K/1080p 30fps, 1080P 120/60fps, 1080P Slow Motion 30fps	4K 10 fps/2.7K 20 fps/1080p/ 720P/VGA 30 fps	4K 10 fps/2.7K 20 fps/1080p/ 720P/VGA 30 fps	4K/2.7K/2K/1080P/720P/480P/ 360P 30fps/2K/1080p 60fps 1296/1080p/720p/480p/ 360P 30fps (Nachtsensor / Night sensor)
5-180 sec	5-59 sec, 1-5 min	3 sec - 10 min	3 sec - 10 min	5-180 sec
JPG & MP4	JPG & MOV	JPG & AVI	JPG & AVI	JPG & MP4
+	+	+	+	+
+	+	+	+	+
1 min - 24 h	1 min - 24 h	1 sec - 24 h	1 sec - 24 h	2x (1 min - 24 h)
5 sec - 24 h	30-59 sec., 1-59 min., 1-24 hrs	3 sec - 24 h	3 sec - 24 h	5 sec - 24h
+	+	+	+	+
0.25 mA	0.1 mA	0.3 mA	0.1 mA	0,25 mA
ca. 18 Monate / Months	ca. 12 Monate / Months	ca. 6 Monate / Months	ca. 6 Monate / Months	ca. 12 Monate / Months
microSD, USB-C	USB-C, Micro SD card, 9V DC	SD, mini USB, 6V DC	SD, USB-C, 6V DC	SD, USB-C
-20°C ~ +60°C	-20°C ~ +60°C	-10°C ~ +60°C	-10°C ~ +60°C	-20°C ~ +60°C
Solarpanel (Lithium Akku), optional: 4x AA Batterie, 5V 1A Netzteil (zum Aufladen des iAkkus) Solar panel (lithium battery), optional: 4x AA batteries, 5V1A power adapter (to charge the integrated battery)	8x AA Batterie oder 6V 2A Netzteil / 8x AA batteries or 6V 2A power adapter	8x AA Batterie oder 6V 2A Netzteil / 8x AA batteries or 6V 2A power adapter	8x AA Batterie oder 6V 2A Netzteil / 8x AA batteries or 6V 2A power adapter	Interner Akku / Internal Battery 5200mAh
USB-C	5.5x2.1mm	3.5x1.35mm Netzteil	3.5x1.35mm	USB-C
IP66	IP66	IP66	IP66	IP66
+ 2.4 GHz (via APP)	-	-	+ (via APP)	+ (via APP)
+	-	-	+	+
5200mAh Akku / Battery (Li-Ion)	-	-	-	DC IN 5V/1A Kapazität / Capacity: 5200 mAh

FERNGLÄSER / BINO



CULARS





MODEL	BRAUN Binocular	BRAUN Binocular	BRAUN Binocular	BRAUN Binocular	BRAUN Binocular
	7 x 50	10 x 50	16 x 50	12 x 50	20 x 50
Magnification	7x	10x	16x	12x	20x
Lens system	ULTRALIT	ULTRALIT	ULTRALIT	ULTRALIT	ULTRALIT
Lens diameter	50 mm	50 mm	50 mm	50 mm	50 mm
Light value	51.0	25.0	9.8	17.4	6.3
Twilight number	18.7	22.4	28.3	24.5	31.6
Prism	Porro BK-7	Porro BK-7	Porro BK-7	Porro BK-7	Porro BK-7
Lens coating	+	+	+	+	+
Focusing	Central	Central	Central	Central	Central
Exit pupil	6.5 mm	5.0 mm	2.8 mm	3.6 mm	4.1 mm
Eye relief	15.0 mm	11.8 mm	6.6 mm	12.0 mm	12.3 mm
Field of view	130 m / 1000 m	99 m / 1000 m	73 m / 1000 m	87 m / 1000 m	58 m / 1000 m
Close focus distance	10 m	10 m	10 m	10 m	10 m
Diopter adjustment	-4 / +4	-4 / +4	-4 / +4	-4 / +4	-4 / +4
Interpupillary distance	56 - 74 mm	56 - 74 mm	56 - 74 mm	56 - 74 mm	56 - 74 mm
Waterproof (max. depth/time)	-	-	-	-	-
Nitrogen filled	-	-	-	-	-
Eyecup system	Rubber pop-up	Rubber pop-up	Rubber pop-up	Rubber pop-up	Rubber pop-up
Thread for tripod	+	+	+	+	+
Dimensions	185 x 185 x 65 mm	185 x 170 x 65 mm	180 x 175 x 68 mm	157 x 184 x 60 mm	170 x 185 x 70 mm
Weight	790 g	790 g	790 g	790 g	750 g
Item no. / EAN	20123 / 4000567201236	20166 / 4000567201663	20124 / 4000567201243	20125 / 4000567201250	20169 / 4000567201694



MODEL	Spotting Scope Ultralit®	Spotting Scope Ultralit®	Spotting Scope Ultralit®	BRAUN Compagno
	15-45 x 60	20-60 x 60	20-60 x 80	8 x 26 WP
Magnification	15-45x	20-60x	20-60x	8x
Lens system	ULTRALIT	ULTRALIT	ULTRALIT	ULTRALIT
Lens diameter	60 mm	60 mm	80 mm	26 mm
Light value	16.0 - 1.8	9.0 - 1.0	16.0 - 1.80	10.6
Twilight number	30.0 - 52.0	34.6 - 60.0	40.0 - 69.3	14.4
Prism	Porro BK-7	Porro BaK-4	Porro BaK-4	Roof BaK-4
Lens coating	Front lens	multi-coated	multi-coated	multi-coated
Focusing	Central	Central	Central	Central
Exit pupil	4.0 - 1.5 mm	3.0 - 1.0 mm	4.0 - 1.3 mm	3.25 mm
Eye relief	12.0 - 15.0 mm	13.5 - 11.0 mm	13.5 - 11.0 mm	16.0 mm
Field of view	21 - 38 m / 1000 m	31 - 16 m / 1000 m	33 - 16.5 m / 1000 m	119 m / 1000 m
Close focus distance	10 m	10 m	10 m	4 m
Diopter adjustment	-4 / +4	-4 / +4	-4 / +4	-4 / +4
Interpupillary distance	-	-	-	56 - 74 mm
Waterproof (max. depth/time)	splash resistant	splash resistant	splash resistant	0.5 m / 15 min.
Nitrogen filled	-	-	-	+
Eyecup system	Rubber Twist-up	Rubber Twist-up	Rubber Twist-up	Rubber Twist-up
Thread for tripod	+	+	+	+
Dimensions	305 x 75 x 140 mm	340 x 80 x 150 mm	430 x 95 x 150 mm	120 x 115 x 40 mm
Weight	650 g	700 g	1,150 g	300 g
Item no. / EAN	20130 / 4000567201304	20131 / 4000567201311	20132 / 4000567201328	20000 / 4000567200000



BRAUN Binocular	BRAUN Scouty	BRAUN Trekking	BRAUN Trekking	BRAUN Monocular	BRAUN Monocular
10 x 25 black	10x25	8 x 32 WP	10 x 32 WP	8 x 42	10 x 42
10x	10x	8x	10x	8x	10x
ULTRALIT	ULTRALIT	ULTRALIT	ULTRALIT	ULTRALIT	ULTRALIT
25 mm	42 mm	32 mm	32 mm	42 mm	42 mm
6.3	27.6	16.0	10.2	27.6	17.6
15.8	18.3	16.0	17.9	18.3	20.5
Roof BK-7	Roof BK-7	Roof BK-4	Roof BK-4	Roof BK-7	Roof BK-7
+	multi-coated	multi-coated	multi-coated	multi-coated	multi-coated
Central	central	Central	Central	Central	Central
2.5 mm	2.5 mm	4.0 mm	3.2 mm	5.2 mm	4.0 mm
10.3 mm	11 mm	16.0 mm	15.0 mm	18.0 mm	13.6 mm
101 m / 1000 m	101 m / 1000 m	131 m / 1000 m	96 m / 1000 m	131 m / 1000 m	101 m / 1000 m
2.5 m	3 m	1.5 m	1.5 m	4.0 m	4.0 m
-4/+4	-4/+4	-4/+4	-4/+4	-4/+4	-4/+4
56 - 74 mm	59 - 76 mm	56 - 74 mm	56 - 74 mm	-	-
-	IPX 4	1.5 m / 3 min.	1.5 m / 3 min.	+	+
-	-	+	+	+	+
Rubber pop-up	Rubber twist-up	Rubber Twist-up	Rubber Twist-up	Rubber Twist-up	Rubber Twist-up
-	-	+	+	+	+
103 x 115 x 35 mm	115 x 114 x 34 mm	120 x 115 x 50 mm	120 x 115 x 50 mm	55 x 155 x 68 mm	170 x 70 x 50 mm
185 g	238 g	460 g	460 g	350 g	350 g
20122 / 4000567201229	20126 / 4000567201267	20154 / 4000567201540	20155 / 4000567201557	20141 / 4000567201410	20142 / 4000567201427



BRAUN Compagno	BRAUN Compagno	BRAUN Compagno	BRAUN Compagno	BRAUN Compagno	BRAUN Compagno
10 x 26 WP	8 x 34 WP	10 x 34 WP	8 x 42 WP	8 x 50 WP	10 x 50 WP
10x	8x	10x	8x	8x	10x
ULTRALIT	ULTRALIT	ULTRALIT	ULTRALIT	ULTRALIT	ULTRALIT
26 mm	34 mm	34 mm	42 mm	50 mm	50 mm
6.8	18.1	11.6	27.6	39.1	25.0
16.1	16.5	18.4	18.3	20.0	22.40
Roof BaK-4	Roof BaK-4	Roof BaK-4	Roof BaK-4	Roof BaK-4	Roof BaK-4
multi-coated	multi-coated	multi-coated	multi-coated	multi-coated	multi-coated
Central	Central	Central	Central	Central	Central
2.6 mm	4.2 mm	3.3 mm	5.2 mm	6.3 mm	5.0 mm
14.1 mm	17.4 mm	16.0 mm	17.3 mm	19.8 mm	17.0 mm
98 m / 1000 m	124 m / 1000 m	106 m / 1000 m	124 m / 1000 m	102 m / 1000 m	101 m / 1000 m
4 m	4 m	4 m	4 m	4 m	3.5 m
-4/+4	-4/+4	-4/+4	-4/+4	-3.5/+3.5	-5/+5
56 - 74 mm	56 - 74 mm	56 - 74 mm	56 - 74 mm	56 - 76 mm	56 - 76 mm
0.5 m / 15 min.	0.5 m / 15 min.	0.5 m / 15 min.	0.5 m / 15 min.	0.5 m / 15 min.	0.5 m / 15 min.
+	+	+	+	+	+
Rubber Twist-up	Rubber Twist-up	Rubber Twist-up	Rubber Twist-up	Rubber Twist-up	Rubber Twist-up
+	+	+	+	+	+
115 x 115 x 40 mm	135 x 125 x 50 mm	130 x 125 x 50 mm	150 x 135 x 60 mm	180 x 140 x 70 mm	180 x 140 x 70 mm
280 g	440 g	420 g	630 g	800 g	810 g
20001 / 4000567200017	20002 / 4000567200024	20003 / 4000567200031	20004 / 4000567200048	20006 / 4000567200062	20007 / 4000567200079



MODEL	BRAUN Wildline	BRAUN Wildline	BRAUN Wildline	BRAUN ED Line	BRAUN ED Line
	8 x 42	10 x 42	12 x 50	8 x 42	10 x 42
Magnification	8x	10x	12x	8x	10x
Lens system	ULTRALIT	ULTRALIT	ULTRALIT	ULTRALIT	ULTRALIT
Lens diameter	42 mm	42 mm	50 mm	42 mm	42 mm
Light value	27.6	17.6	17.4	27.6	17.6
Twilight number	18.3	20.5	24.5	18.3	20.5
Prism	Roof BK-7	Roof BK-7	Roof BK-7	Roof BaK-4	Roof BaK-4
Lens coating	multi-coated	multi-coated	multi-coated	multi-coated	multi-coated
Focusing	Central	Central	Central	Central	Central
Exit pupil	4.0 mm	3.4 mm	3.0 mm	5.2 mm	4.1 mm
Eye relief	12.5 mm	12.5 mm	12.8 mm	22.0 mm	18.0 mm
Field of view	108 m / 1000 m	106 m / 1000 m	88 m / 1000 m	131 m / 1000 m	122 m / 1000 m
Close focus distance	4 m	4 m	5 m	3.5 m	3.5 m
Diopter adjustment	-4 / +4	-4 / +4	-4 / +4	-4 / +4	-4 / +4
Interpupillary distance	59 - 76 mm	59 - 76 mm	63 - 76 mm	56 - 76 mm	56 - 76 mm
Waterproof (max. depth/time)	–	–	–	0.5 m / 15 min.	0.5 m / 15 min.
Nitrogen filled	–	–	–	+	+
Eyecup system	Rubber Twist-up	Rubber Twist-up	Rubber Twist-up	Rubber Twist-up	Rubber Twist-up
Thread for tripod	+	+	+	+	+
Dimensions	130 x 150 x 56 mm	130 x 150 x 56 mm	139 x 180 x 65 mm	150 x 128 x 53 mm	150 x 128 x 53 mm
Weight	570 g	570 g	750 g	622 g	635 g
Item no. / EAN	20010 / 4000567200109	20011 / 4000567200116	20012 / 4000567200123	20020 / 4000567200208	20021 / 4000567200215



MODEL	BRAUN Premium	BRAUN Binocular	BRAUN Opera 3x25	BRAUN Opera 3x25	BRAUN Opera 3x25	BRAUN Opera 3x25
	10 x 50 WP	8 x 40	gold-black	gold-pearl	gold-burgundy	gold-gold
Magnification	10x	8x	3x	3x	3x	3x
Lens system	ULTRALIT	ULTRALIT	ULTRALIT	ULTRALIT	ULTRALIT	ULTRALIT
Lens diameter	50 mm	40 mm	25 mm	25 mm	25 mm	25 mm
Light value	25.0	25.0	69.4	69.4	69.4	69.4
Twilight number	22.4	17.9	8.7	8.7	8.7	8.7
Prism	Porro BaK-4	Porro BK-7	Galilei BK-7	Galilei BK-7	Galilei BK-7	Galilei BK-7
Lens coating	multi-coated	+	–	–	–	–
Focusing	Central	Central	Central	Central	Central	Central
Exit pupil	5.0 mm	5.0 mm	8.3 mm	8.3 mm	8.3 mm	8.3 mm
Eye relief	16.1 mm	11.0 mm	–	–	–	–
Field of view	114 m / 1000 m	149m / 1000 m	105 m / 1000 m	105 m / 1000 m	105 m / 1000 m	105 m / 1000 m
Close focus distance	7 m	10 m	3 m	3 m	3 m	3 m
Diopter adjustment	-4 / +4	-4 / +4	–	–	–	–
Interpupillary distance	56 - 72 mm	56 - 74 mm	56 - 69 mm	56 - 69 mm	56 - 69 mm	56 - 69 mm
Waterproof (max. depth/time)	0.5 m / 15 min.	–	–	–	–	–
Nitrogen filled	+	–	–	–	–	–
Eyecup system	Rubber pop-up	Rubber pop-up	–	–	–	–
Thread for tripod	+	+	–	–	–	–
Dimensions	185 x 200 x 75 mm	145 x 175 x 65 mm	100 x 55 x 40 mm	100 x 55 x 40 mm	100 x 55 x 40 mm	100 x 55 x 40 mm
Weight	960 g	680 g	140 g	140 g	140 g	140 g
Item no. / EAN	20161 / 4000567201618	20165 / 4000567201656	20112 / 4000567201120	20113 / 4000567201137	20119 / 4000567201199	20127 / 4000567201274

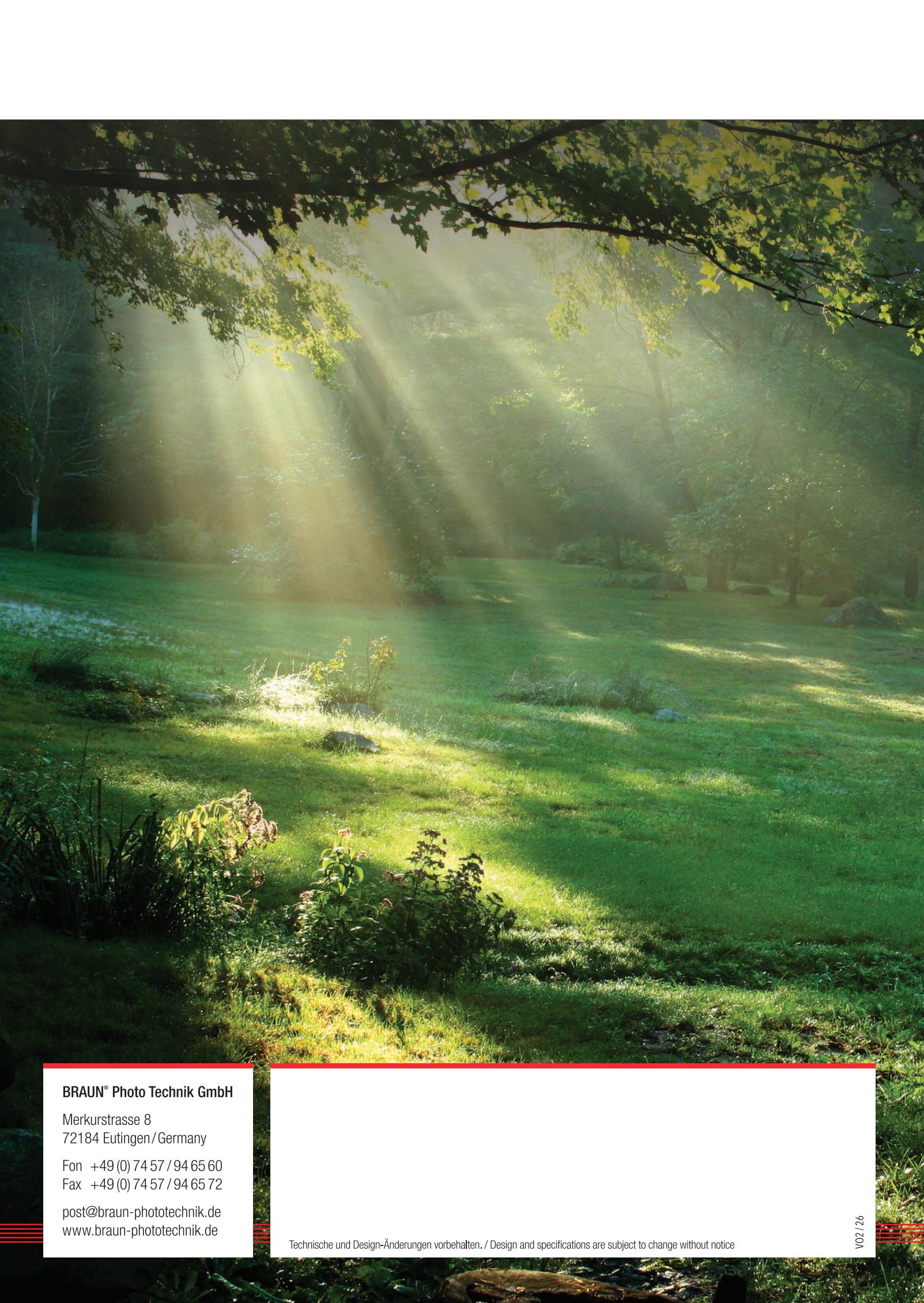


BRAUN ED Line	BRAUN Marine *	BRAUN 15x70	BRAUN Binocular	BRAUN Binocular	BRAUN Premium
12 x 50	Binocular 7 x 50	LightPro	10-30 x 60 Zoom	8-24 x 50 Zoom	7 x 50 WP
12x	7x	15x	10 - 30x	8 - 24x	7x
ULTRALIT	ULTRALIT	ULTRALIT	ULTRALIT	ULTRALIT	ULTRALIT
50 mm	50 mm	70 mm	60 mm	50 mm	50 mm
17.4	51.0	21.8	36.0 - 4.0	39.1 - 4.3	51.0
24.5	18.7	32.4	24.5 - 42.4	20.0 - 34.6	18.7
Roof BaK-4	Roof BaK-4	Porro BK-7	Porro BK-7	Porro BK-7	Porro BaK-4
multi-coated	multi-coated	multi-coated	+	+	multi-coated
Central	-	Central	Central	Central	Central
4.1 mm	6.8 mm	4.6 mm	5.8 - 2 mm	2.1 - 6.2 mm	7.0
18.0 mm	22.0 mm	12.3 mm	4.5 - 11.7 mm	12.5 - 16.5 mm	27.4
102 m / 1000 m	132 m / 1000 m	66 m / 1000 m	62-34 m / 1000 m	78-40 m / 1000 m	116 m / 1000 m
4 m	10 m	10 m	15 m	10 m	7 m
-4 / +4	-5 / +5	-4 / +4	-4 / +4	-2 / +2	-2 / +2
56 - 76 mm	56 - 74 mm	56 - 74 mm	56 - 74 mm	56 - 72 mm	56 - 72 mm
0.5 m / 15 min.	+	-	-	-	0.5 m / 15 min.
+	+	-	-	-	+
Rubber Twist-up	Rubber pop-up	Rubber pop-up	Rubber pop-up	Rubber pop-up	Rubber pop-up
+	+	+	+	+	+
176 x 133 x 59 mm	200 x 155 x 80 mm	240 x 220 x 90 mm	240 x 205 x 85 mm	190 x 185 x 70 mm	200 x 195 x 75 mm
750 g	900 g	1,300 g	1,090 g	820 g	950 g
20022 / 4000567200222	20135 / 4000567201359	20193 / 4000567201939	20117 / 4000567201175	20168 / 4000567201687	20160 / 4000567201601



MODEL	BRAUN Binocular	BRAUN RangeFinder	BRAUN Night Vision	BRAUN Night Vision
	10x42 LRF Rangefinder	1000WH	4.0	Mini
Magnification	10x	6x	3x Ocular Magnification	8x digital
Lens	42 mm	21.0 mm	Ultralit 1:1.2/25mm, automatic Infrared Filter	Ultralit 1:1.2/25mm, automatic infrared filter
Battery (included)	CR2 3V	CR2 3V	18650, 2600mAh lithium battery	18650, 2600mAh lithium battery
Speed Range	-	0 - 300 km/h	-	-
Laser	Class 1	Class 1	-	-
Measuring Range	5 - 2743 m	4 - 1000 m	-	-
Precision	+/- 1m	+/- 1m/Yds	-	-
Pupil Distance	17.5 mm	16.0 mm	-	-
View Angle	5.5°	7.2°	-	-
Splash water resistant	+	+	-	-
Mode	Hunting / Angle	Golf Mode, H.M. Fog Mode, Slope Measurement	Day, Night	Day / Night
Image Sensor	-	-	1.3MP „Star Light“ CMOS-Sensor	1.3MP „Star Light“ CMOS sensor
Resolution (Image)	-	-	3MP (2048x1536) interp. / 2MP (1600x1200) interp. / 1MP (1280x960) / VGA (640x480)	2MP - 36MP interp. / 1MP (1280x960)
Resolution (Video)	-	-	1080p / 720p / VGA @ 30 fps (night sensor)	4K / 1080p interp. / 720p / VGA
Digital zoom	-	-	4x	8x
Memory Medium	-	-	microSD (max. 32GB)	MicroSD card, up to 256 GB
Power Supply	-	-	18650, 2600mAh Lithium-Battery, supports Powerbank-Supply	2600mAh lithium battery
Infrared Lighting	-	-	3W, 850nm, 7 Intensity level available	3W, 850nm, 7 intensity levels selectable
Observation range	-	-	up to 250m in darkness	up to 300m in darkness
Water Protection	IP67	-	IP54	-
Item no. / EAN	20030 / 4000567200307	20176 / 40 00567 20176 2	20173 / 40 00567 20173 1	20174 / 4000567201748

*Floating waterproof binoculars with illuminated 360° compass - Batteries included



BRAUN® Photo Technik GmbH

Merkurstrasse 8
72184 Eutingen/Germany

Fon +49 (0) 74 57 / 94 65 60
Fax +49 (0) 74 57 / 94 65 72

post@braun-phototechnik.de
www.braun-phototechnik.de

Technische und Design-Änderungen vorbehalten. / Design and specifications are subject to change without notice