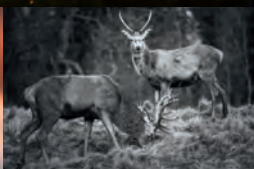




OUTDOOR



www.braun-phototechnik.de

The use of wild cameras

Being a scouting cam/camera trap, the use of the camera has been clearly defined, opening up completely new opportunities to forest owners or rangers and other users who want to keep preserves, wildlife population or any activity in the forest or on their own premises under surveillance, documentation included. The BRAUN Scouting cams are based on a digital camera unit which will be activated by motion detectors. The camera has a waterproof housing (IP54).

Founded in 1915 as Karl Braun KG, a factory for optical devices and metalware, the company manufactured binoculars and intermediate goods, including for the radio industry. After the second World War and the Currency Reform in 1948, Karl Braun KG became Carl Braun Camera-Werk Nürnberg as one of the leading slide projector and camera suppliers in Germany. The attractive Braun digital camera models were successfully introduced to the market in 2003. In 2004 the company was renamed Braun Photo Technik GmbH Nürnberg.

Both quality and contemporary products at a fair market value are the foundation for the current, excelling position in the market for photo technics suppliers in Germany. A sense of quality, high potential for innovation, clear and consistent product strategies, high-performing service, short delivery times and fast repair services define Braun Photo Technik GmbH as a flexible and valued partner.

Since 2015 we are exhibitor at the IWA show. The most renowned manufacturers and distributors meet here: The leading fair for hunting guns, sporting guns, outdoor and security equipment.

Scouting Cam Black300



Art-Nr 57660

The BRAUN Scouting cam BLACK 300 is based on a digital camera unit which will be activated by motion detectors. The camera has a waterproof housing. Recordings of motions will be saved on a SD memory card (up to 32). The BRAUN Scouting Cam BLACK300 has a standby time of 6 months. Because of the inserted 5 MP sensor the camera makes excellent color shots by day. As soon as the day light is weaker, the 36 black infrared of LEDs are activated and illuminate the scene. At night all recordings are in black and white pictures/video. The camera can be fixed by a strap on an object/tree by strap or placed on a tripod. The various setting options can be adjusted easily via the 2-inch TFT screen of the camera by the supplied handy remote control.

- Invisible IR flash with a range of up to 20 meters
- 5 Megapixel resolution (8 and 12 MP interpolated)
- Short trigger time of 1.1 seconds
- Navigation in different languages
- Comfortable 2" TFT color display
- Stand-by time up to 6 months
- Power supply: 8 x 1,5V AA-batteries
- IP54 water proof



Scouting Cam Black300phone

BRAUN's BLACK300phone scouting cam comes in a new casing and features a high-quality, 5 mega pixel image sensor (12 MP interpolated), a PIR motion detector with a detection radius of 60° and 36 black IR LEDs for night shots. The GSM module in the camera is used wherever the device can connect to a mobile communication network. The camera contacts the respective user via a SIM card installed inside the unit. You can define 1 to 4 phone numbers for MMS messages or 1 to 4 email addresses for emailing to have the latest photos of events sent to mobile phones or email accounts via MMS or SMTP. A flat rate or a prepaid card will help you to keep mobile communication costs to a minimum. The various setting options can be adjusted easily via the 2-inch TFT screen of the camera by the supplied handy remote control.

- Sends pictures via MMS or e-Mail
- Easy setup via the included software
- Invisible IR Flash with a range of up to 20 meters
- Picture resolution: 5MP
(8MP and 12MP interpolated)
- Video resolution: 1080p, 720P, VGA
- Comfortable 2" TFT color display
- Trigger time of 1.1 seconds



Art-Nr 57662



Scouting Cam Black700



**Slim
and elegant
Design**

Art-Nr 57663

The technology of the BRAUN Scouting Cam Black700 cameras is based on a digital camera unit, which is housed in a weatherproof casing, and is activated by a movement sensor. The pictures/film sequences are saved on a micro SD card (up to 32 G). The BRAUN Scouting Cam Models BLACK700 and BLACK700phone have a standby time of about 6 months. The built-in 5 MP sensor records very good color pictures. As soon as daylight fades, the 48 black infrared LED lights are activated to light up the scene. Technically speaking, this means that nighttime recordings are in black and white. The camera can be fixed to an object or tree with the included strap, or placed on a tripod.

- Invisible IR Flash with a range of up to 20 meters
- 5MP (8MP, 12MP and 16MP interpolated)
- Trigger time of 0,5 seconds
- Navigation in different languages
- Comfortable 2" TFT color display
- Stand-by time up to 6 months
- Power supply: 6 x AA-batteries
- IP54 water proof



Scouting Cam Black700phone

The model BLACK700phone has a GSM communication module. Everywhere there is mobile network coverage, the GSM module in the device can be used. Once a SIM card is installed in the device, the camera will contact the corresponding user. You can predefine between 1 and 4 phone numbers for MMS, or 1-4 e-mail addresses. This enables the device to send current pictures of what is being recorded via MMS or SMTP to a mobile phone, or to an e-mail address. A flat rate or prepaid card can help to keep the costs low.

- Sends pictures via MMS or e-Mail
- Easy setup via the included software
- Invisible IR Flash with a range of up to 20 meters
- Picture resolution: 5MP
(16MP, 12MP and 8MP interpolated)
- Video resolution: 1080p, 720P, VGA
- Comfortable 2" TFT color display
- Trigger time of 0.5 seconds



**Slim
and elegant
Design**

Art-Nr 57664



Protective Housing

**Art-Nr
58125**

Scouting Cam BLACK
300 / BLACK 300phone.



This protective housing is suitable for the BRAUN Scouting Cam BLACK300 and BLACK300phone. Protection against theft and vandalism: The stable housing has bore holes for adjusting a safety lock or cable lock (lock not included in delivery). Additional protection against dirt, shock and weather conditions.

- weight: 0,55 kg
- material: steel
- size: 16, 5cm x 10,5cm x 9,5cm
- painting: green
- assembly opportunities:
housing is fixable on a tree or wall by long screws,
by mounting strap or by the camera's tripod socket

Proof of performance



TECHNICAL DATA SCOUTING CAM BLACK300

Image sensor	5 Mega Pixels Color CMOS (12 MP interpolated)
Memory medium	SD Card (up to / 32GB)
Lens	F=3.1; FOV=60
Dimension	145mm x 80mm x 55 mm
IR Filter	Full Automatic IR Filter
TFT Display	2.0" (Color-TFT LCD)
PIR sensor: angle of detection	60 °
IR LEDs	Black 36 LEDs
Max Night Vision/Lighting Distance	65ft/20 meter
Trigger Time	1.1 sec (second)
Triggering Interval	1/5/10/30 sec/min (default 1 sec)
Selectable Image Resolution	12MP/8MP/5MP
Multiple Photo	1/3/6/9 (pictures)
Video Resolution	1080P/720P/VGA
File Format	JPEG / AVI
Date and Time Imprint	Yes
Exposure	Auto
Password Security	4 digital numbers
Periodic shot	1 sec ~24 h
Stand-by current	0.2 mA
Stand-by time	6 Months
Interface	TV out (NTSC/PAL); USB; SD Card Holder; 6V DC External
Fix Method	Belt, tripod
Operation Temperature	-30 ~+70°
Power Supply	8xAA Batteries
Water proof	IP54

TECHNISCHE DATEN SCOUTING CAM BLACK300PHONE

Image sensor	5 Mega Pixels Color CMOS (12 MP interpoliert)
Memory medium	micro SD Card (bis 32GB)
Lens	F=3.1; FOV=60
Dimension	145mm x 80mm x 55 mm
IR Filter	Full Automatic IR Filter
TFT Display	2.0" (Farbe- TFT LCD)
PIR sensor: angle of detection	60 °
IR LEDs	36 schwarze LEDs
Max Night Vision/Lighting Distance	65ft/20 Meter
Trigger Time	1.1 sec (Sekunde)
Triggering Interval	1/5/10/30 sec/min (Voreinstellung 1 sec)
Selectable Image Resolution	12MP/8MP/5MP
Multiple Photo	1/3/6/9 (Bilder)
Video Resolution	1080P/720P/VGA
File Format	JPEG / AVI
Date and Time Imprint	Ja
Exposure	Auto
Password Security	4 Nummern
Frequenz	2G GSM 850/900/1800/1900 MHz
Remote via SMS	Ja
GPRS transmission	Via Email
MMS mobile phone	1-4 Telefonnummern
MMS Email	1-4 Emailadresse
Periodic shot	1 sec ~24 h
Stand-by current	0.2 mA
Stand-by time	6 months
Interface	TV out (NTSC/PAL); micro USB; micro SD Card + SIM Holder; 6V DC External
Fix Method	Belt, tripod
Operation Temperature	-30 ~+70°
Power Supply	8xAA Batteries
Water proof	IP54

TECHNICAL DATA SCOUTING CAM BLACK700

Image sensor	5 Mega Pixels CMOS sensor
Memory medium	Micro SD Card (up to 32GB)
Lens	F=3.1 / FOV=90°
Dimensions	175x85x45 mm
TFT Display	2.0" (Color-TFT-LCD)
LEDs	invisible, 940 nm
IR LEDs	Black 48 LEDs
PIR Sensor (sight angle)	120°
PIR Distance	High/Normal/Low (max. 65ft)
max. Night Vision distance	65ft
Trigger speed	0.5 sec
Triggering interval	1/5/10/30 sec/min (default 1 sec)
Selectable Image Resolution	16MP/12MP/8MP
Multiple photo	1/3/6/9
Timelapse	30/60/240 min (JPEG)
Video resolution	1080p/ 720p/ VGA
File format	JPEG/AVI
Imprint (day/time)	Yes
Imprint (Moon Phase)	Yes
Exposure	Auto (optional ISO100/200/400)
Password security	PIN code (4 digits)
Stand-by current	0.2 mA
Stand-by time	6 months
Operation temperature	-20 - +60° C
Power supply	6xAA Batteries
water proof	IP54
Interface	micro USB, micro SD, 9V DC External

TECHNICAL DATA SCOUTING CAM BLACK700PHONE

Image sensor	5 Mega Pixels CMOS sensor
Memory medium	Micro SD Card (up to 32GB)
Lens	F=3.1 / FOV=90°
Dimensions	175x85x45 mm
TFT Display	2.0" (Color-TFT-LCD)
LEDs	invisible, 940 nm
IR LEDs	Black 48 LEDs
PIR Sensor (sight angle)	120°
PIR Distance	High/Normal/Low (max. 65ft)
max. Night Vision distance	65ft
Trigger speed	0.5 sec
Triggering interval	1/5/10/30 sec/min (default 1 sec)
Selectable Image Resolution	16MP/12MP/8MP
Multiple photo	1/3/6/9
Timelapse	30/60/240 min (JPEG)
Video resolution	1080p/ 720p/ VGA
File format	JPEG/AVI
Imprint (day/time)	Yes
Imprint (Moon Phase)	Yes
Exposure	Auto (optional ISO100/200/400)
Password security	PIN code (4 digits)
Frequency bands (2G GSM)	850/900/1800/1 900 MHz
Frequency bands (3G UMTS/HSPA)	850/900/1 900/2 100 MHz
Remote control	via SMS
GPRS transmission	Data transfer by email
MMS to phone	1-4 phone numbers
MMS to e-mail	1-4 e-mail addresses
Stand-by time	0.2 mA
Standby-Zeit	6 months
Power supply	6xAA Batteries
water proof	IP54
Operation temperature	-20 - +60° C
Interface	micro USB, micro SD, SIM, 9V DC External

Outdoor Cam Maverick

**Full HD Outdoor
Camera
exclusive design**

Art-Nr
57519 Black
57520 Camo



The BRAUN Maverick impresses not only with its smart design and high-quality videos in true full HD quality, it is unique in the application and is reliable and above all easy to use. Coupled with a battery lifetime up to 2 hours and a housing with protection against splashing water and dust it is the perfect companion for all outdoor fans, who do not want to have their camera operational with various accessories, brackets and extra protective housing. A shield hat is enough to document a day. Enjoy this day - the BRAUN Maverick will do the rest.

- Image Sensor: 5 MP CMOS
- Image resolution: 8MP (3264x2448); 5MP (2592x1944); 3MP (2048x1536)
- Video resolution: Full HD (1920x1080@30fps), HD (1280x720@30fps), VGA 640x480@30fps)
- Video file format: MOV
- External memory: Micro SD up to 32GB (optional)
- HDMI: Yes
- Zoom: 8 x Digital
- Power sources: Built-in lithium battery 1150mAh
- View angle: 120°
- Lens: Fixed Focus F1.8, f=3.0mm
- Water- and Dustprotected IP54
- Anti-Shake function
- USB 2.0



BRAUN Bike Cam

Weatherproof Full HD Action camera with integrated LED Light & Power Bank. Perfect for to use as dash cam for bikers in road traffic, for E-Bike tours or cycling with power support for your mobile phone. The battery (6600 mA) holds up to 10 hours and can be simultaneously used for lighting, camera and as Power Bank for to charge the mobile phone. Ideal for long tours on the bike or E-Bike! Also suitable for off-road tours.

- Video Resolution 1080p/30fps, 720p/60fps
- Photo Resolution Max 12 MP
- Waterproof to IP65
- Wide-angle lens with 150 °
- 1.5 „(3.81 cm) display with HD Resolution (960 x 240)“
- Power Bank function (also with simultaneous recording and light function)
- Battery capacity (LiPo 6600 mA): at 720p about 10 hours, at 1080p approx. 5 hours
- LED Light: CREE 5W LED
- Recording Memory: Micro SD up to 32 GB (class 10, optional)
- Connections: Micro USB, USB
- Menu Language: Multi-Lingual
- Weight: 315g

Light and Action Cam
Dash Cam
Power Bank



Art-Nr 57526









BRAUN Compagno series



High quality, waterproof binoculars in top-current design that are characterized by a high optical quality with fully multi-coated lenses and a secure, user-friendly operation. A grippy, rugged rubber coating ensures a comfortable hold and comfort through the Nitrogenbefüllung the glasses are fogging. The models of BRAUN Compagno series are the ideal travel companions and a must in hiking gear.



Modell	8x26 WP	10x26 WP	8x34 WP
			
Enlargement	8x	10x	8x
Lens diameter	26 mm	26 mm	34 mm
prism	Dachkant BAK-4	Dachkant BAK-4	Dachkant BAK-4
lens	ULTRALIT®	ULTRALIT®	ULTRALIT®
lens coating	compl. Multi-coated optics	compl. Multi-coated optics	compl. Multi-coated optics
Field of view	6,8° (118,6 m/1000 m)	5,6° (98 m/1000 m)	7,0° (124 m/1000 m)
focusing	Central	Central	Central
exit pupil	3,25 mm	2,6 mm	4,2 mm
Eye relief	16 mm	14,1 mm	17,4
Min. Close range	4 m	4 m	4 m
dioptr compensation	-4 / +4	-4 / +4	-4 / +4
Eye Relief	56 – 74 mm	56 – 74 mm	56 – 74 mm
waterproof (Max. Depth / time)	0,5 m / 15 min.	0,5 m / 15 min.	0,5 m / 15 min.
Argon filled	yes	yes	yes
tripod socket	yes	yes	yes
Dimensions (approx)	117 x 115 x 40 mm	117 x 115 x 40 mm	130 x 126 x 45 mm
Weight (approx)	325 g	325 g	450 g
Item No	20000	20001	20002
EAN	40 00567 20000 0	40 00567 20001 7	40 00567 20002 4

Modell	10x34 WP	8x42 WP	10x42 WP
			
Enlargement	10x	8x	10x
Lens diameter	34 mm	42 mm	42 mm
prism	Dachkant BAK-4	Dachkant BAK-4	Dachkant BAK-4
lens	ULTRALIT®	ULTRALIT®	ULTRALIT®
lens coating	compl. Multi-coated optics	compl. Multi-coated optics	compl. Multi-coated optics
Field of view	6,0° (106 m/1000 m)	7,1° (124 m/1000 m)	6,1° (106 m/1000 m)
focusing	Central	Central	Centrall
exit pupil	3,3 mm	5,2 mm	4,2 mm
Eye relief	16 mm	17,3 mm	16,1 mm
Min. Close range	4 m	4 m	4 m
dioptr compensation	-4 / +4	-4 / +4	-4 / +4
Eye Relief	56 – 74 mm	56 – 74 mm	56 – 74 mm
waterproof (Max. Depth / time)	0,5 m / 15 min.	0,5 m / 15 min.	0,5 m / 15 min.
Argon filled	yes	yes	yes
tripod socket	yes	yes	yes
Dimensions (approx)	130 x 126 x 45 mm	146 x 135 x 55 mm	146 x 135 x 55 mm
Weight (approx)	450 g	550 g	550 g
Item No	20003	20004	20005
EAN	40 00567 20003 1	40 00567 20004 8	40 00567 20005 5

MARINE BINOCULAR 7x50

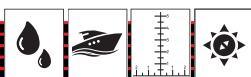


Art-Nr 20135

The BRAUN MARINE BINOCULAR is an important aid on board, with an illuminated compass that facilitates navigation. Contrary to standard binoculars, the Marine binoculars are built with a better light aperture, making them adapted to being at sea. The sevenfold magnification typical for marine binoculars are successful in combining magnification and shake-free images.

The most distinguished feature of the BRAUN MARINE BINOCULAR is its slender weight, as well as being waterproof and buoyant. It's suited for spectacle wearers, and includes an illuminated reticle to measure distance. With its ergonomic and modern design as well as easy handling, the product developers achieved what was aimed to prioritize. The high quality optic enables a luminous, color neutral and contrast-rich image.

- Magnification: 7x
- Lens Diameter: 50 mm
- Field of Vision: 132m/1000m
- Twilight Factor: 18.7
- Prism: Porro BAK-4
- Lens Optimization: multiple
- Waterproof: yes
- Buoyant: yes
- Fogproof: yes
- Exit pupil: 6.8 mm
- Eye Distance: 22 mm
- Diopter Compensation: +5/-5 dpt
- Distance Measurement: reticle
- Color and Housing: Yellow/rubber
- 360° Compass: illuminated
- Weight/Measurements (W/L/H): 890 g / 20x8x15 cm
- Batteries included: 2x LR 936



RangeFinder 600WH

The BRAUN RangeFinder 600WH has a 21 mm size Lens with a magnification of 6x. The built-in laser is compliant with Class 1, the distance measured is 4-600m, and speed can be measured from 0 to 300kmh. The small handy device of only 105x75x34mm weights a mere 140g, is splash-waterproof and easily fits into almost any pocket.



Distance (y)



Vertical Height



Golf Mode



Fog Mode



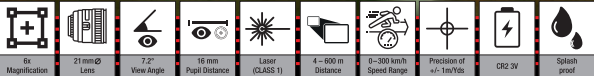
Speed (mph)



Slope



Art-Nr 20175





BRAUN PHOTO TECHNIK GmbH

Merkurstrasse 8

72184 Eutingen / Germany

Tel.: +49 (0)74 57 / 94 65 60

Fax: +49 (0)74 57 / 94 65 72 post@

braun-phototechnik.de

More products and information can
be found on our website.



Right to technical modifications reserved.

No liability is accepted for errors or misprints.

Ref.-Nr. 0094500344 / V01/18

www.braun-phototechnik.de